



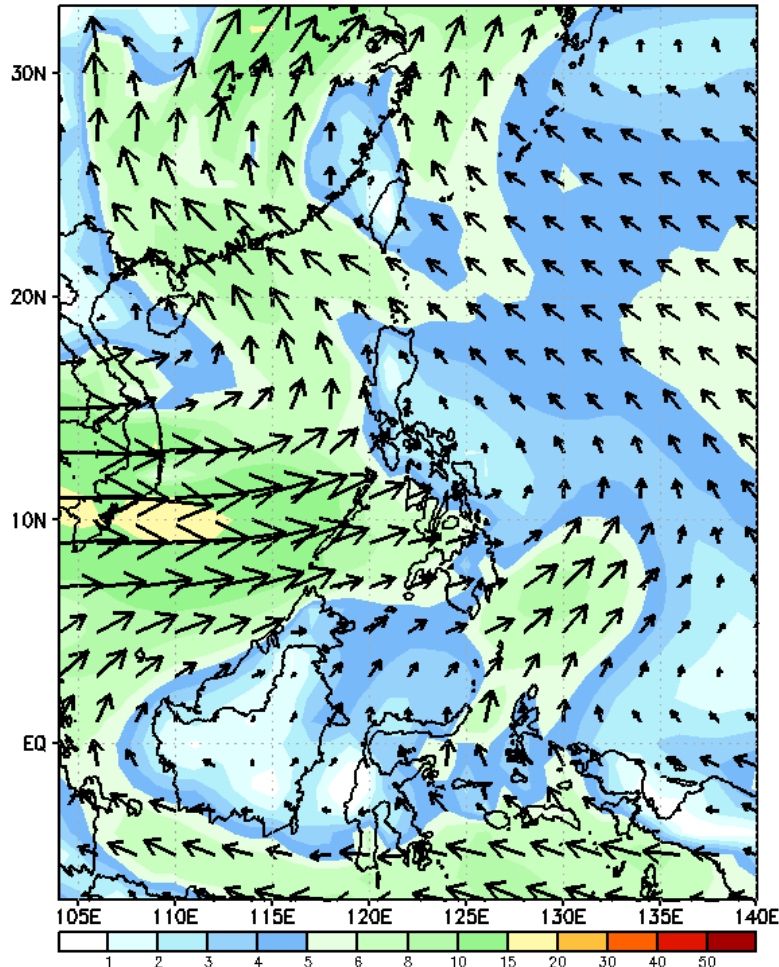
Week 1 & Week 2 Forecast for the Philippines using GEFS Model



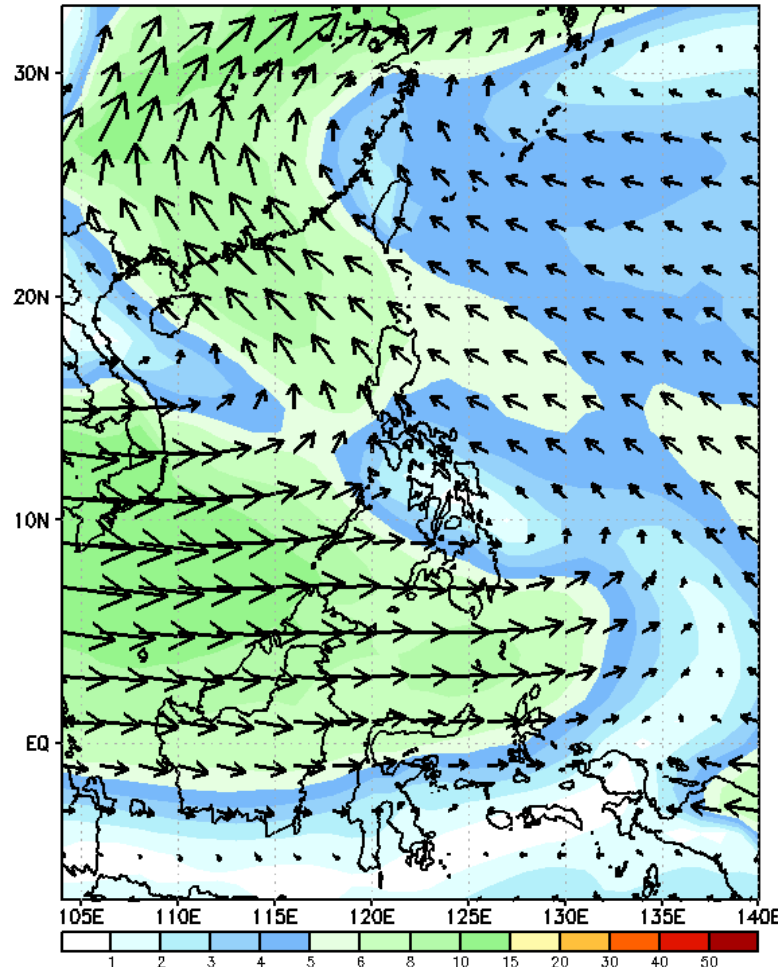
GEFS Week-1 Wind Forecasts:

Week 1: Jul 15-21, 2024

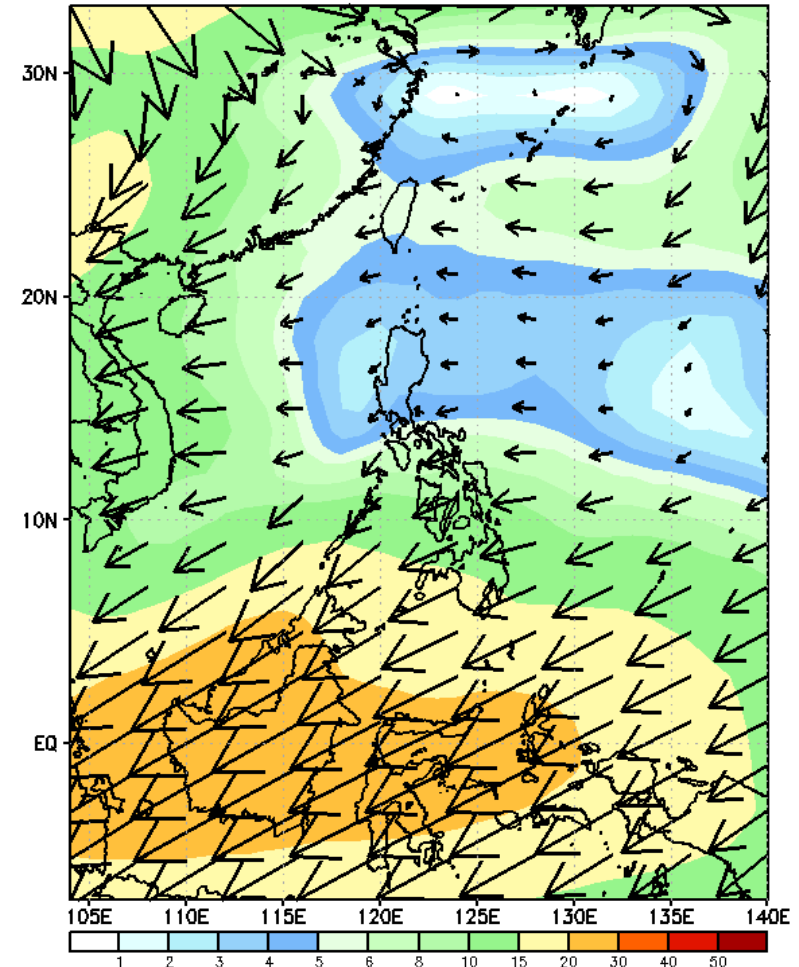
GEFS Week-1 850-hPa Wind Total
Valid: 20240715 - 20240721



GEFS Week-1 700-hPa Wind Total
Valid: 20240715 - 20240721

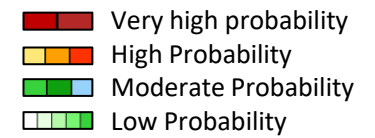


GEFS Week-1 200-hPa Wind Total
Valid: 20240715 - 20240721



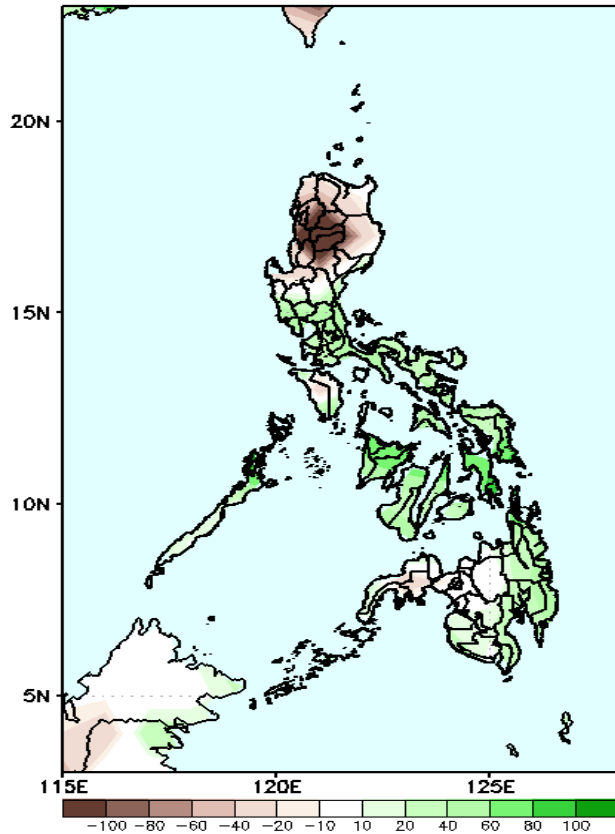
Southwest Monsoon affecting most parts of the country during the forecast period

Precipitation Anomaly and Exceedance Probability > 25/50 mm

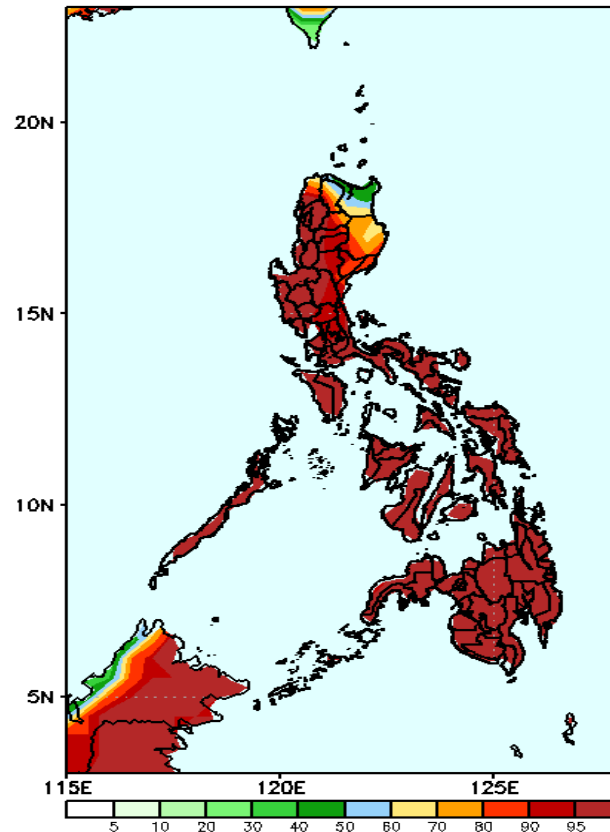


Week 1: Jul 15-21, 2024

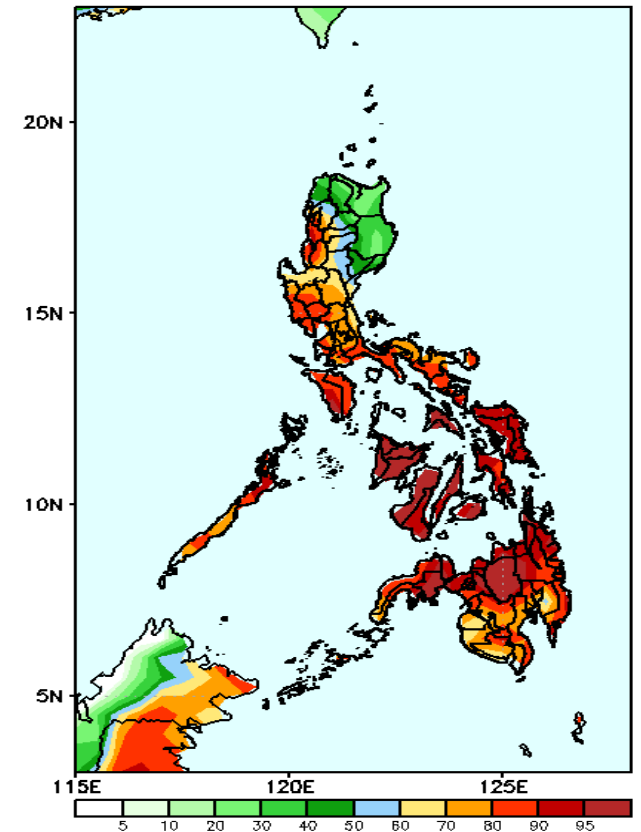
GEFS Week-1 Precip Anomaly
Valid: 20240715 - 20240721



GEFS Week-1 Exceedance Prob. > 25mm
Valid: 20240715 - 20240721



GEFS Week-1 Exceedance Prob. > 50mm
Valid: 20240715 - 20240721



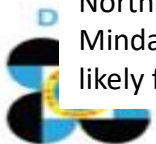
Rainfall deficit of more than 100mm in most parts of CAR, Ilocos Sur, and La Union; 20-40mm over the rest of Northern and Central Luzon, Mindoro, and northeastern Mindanao while 20-80mm increase of rainfall will be likely for the rest of the country.

Probability to Exceed 25mm

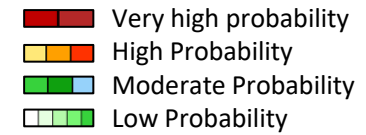
- High to very high over most parts of the country;
- Moderate to high over Cagayan.

Probability to Exceed 50mm

- High to very high over Southern Luzon, Visayas and Mindanao;
- Moderate to high the rest of Luzon;
- Low to moderate over Apayao, Isabela and Cagayan.

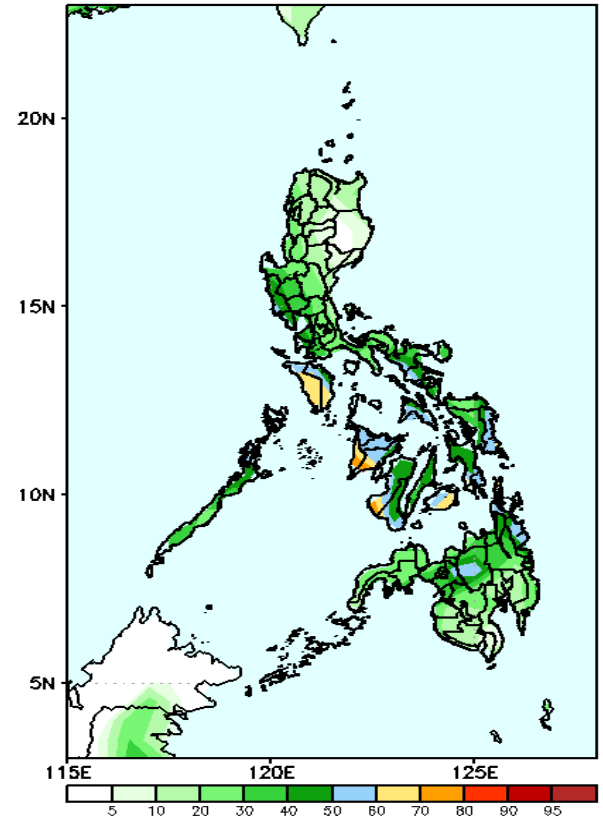


Exceedance Probability > 100/150/200 mm



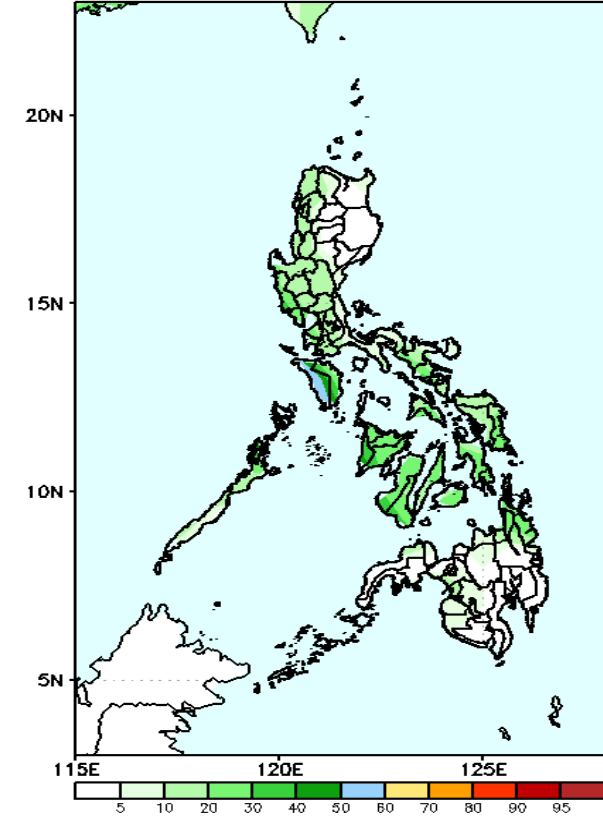
Week 1: Jul 15-21, 2024

GEFS Week-1 Exceedance Prob. > 100mm
Valid: 20240715 - 20240721



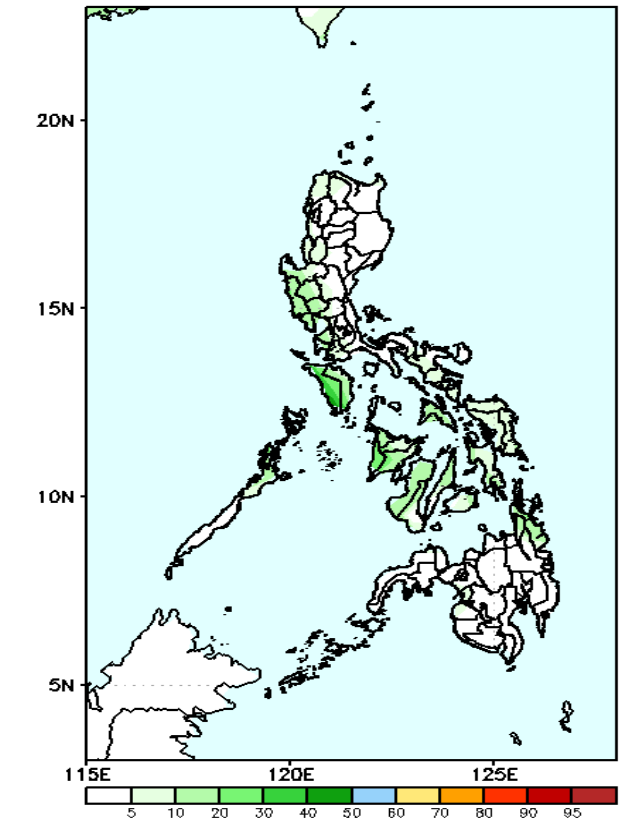
- Probability to Exceed 100mm**
- Moderate to high over Mindoro Provinces and most of Visayas;
 - Low to moderate over the rest of the country.

GEFS Week-1 Exceedance Prob. > 150mm
Valid: 20240715 - 20240721



- Probability to Exceed 150mm**
- Moderate to high Occidental Mindoro;
 - Low to moderate over the western sections of Luzon and Visayas;
 - Low over the rest of the country.

GEFS Week-1 Exceedance Prob. > 200mm
Valid: 20240715 - 20240721

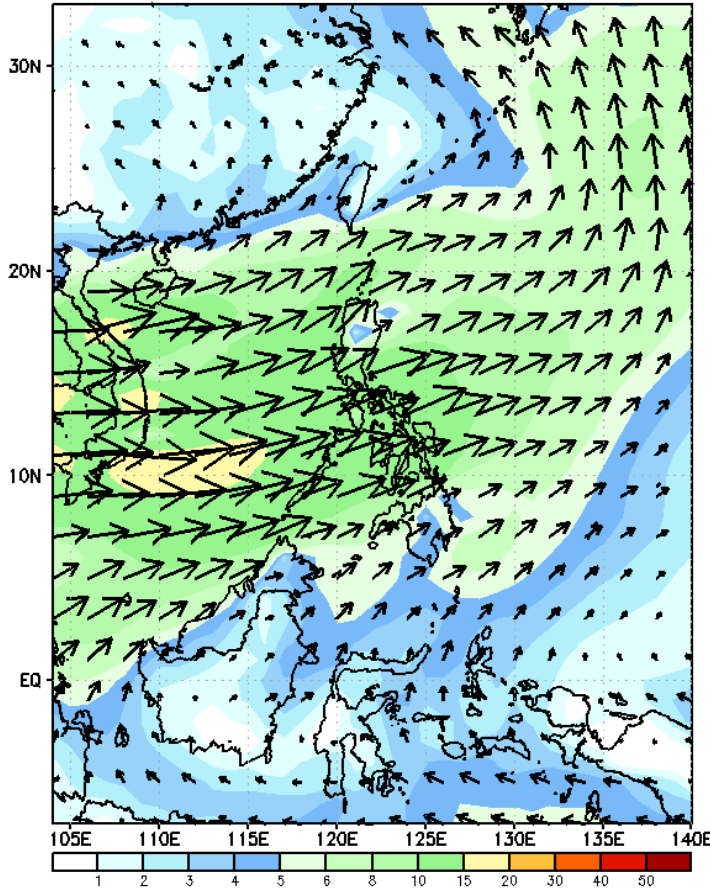


- Probability to Exceed 200mm**
- Low across the country.

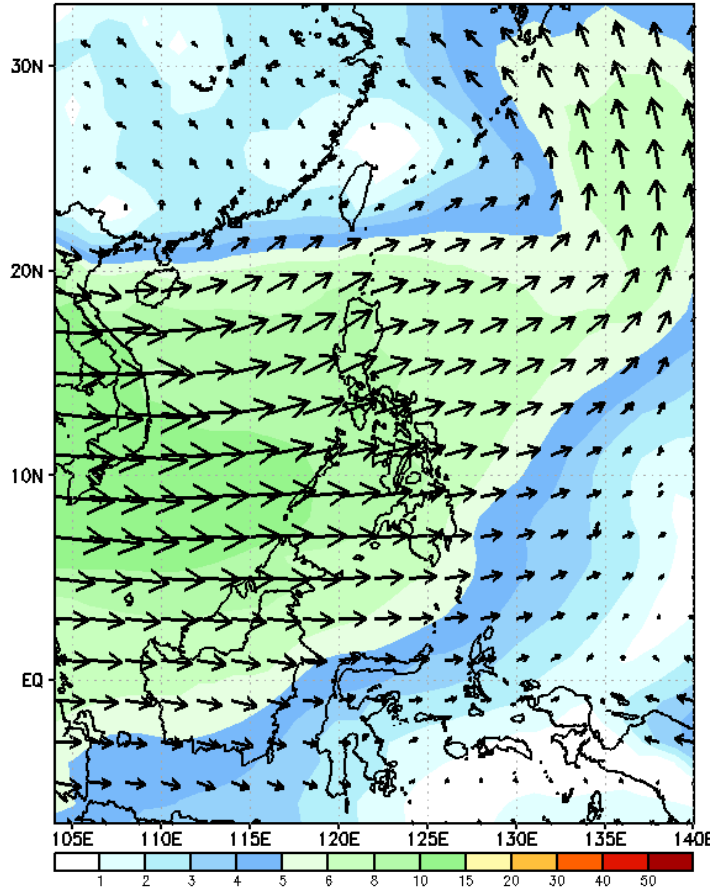
GEFS Week-2 Wind Forecasts:

Week 2: Jul 22-28, 2024

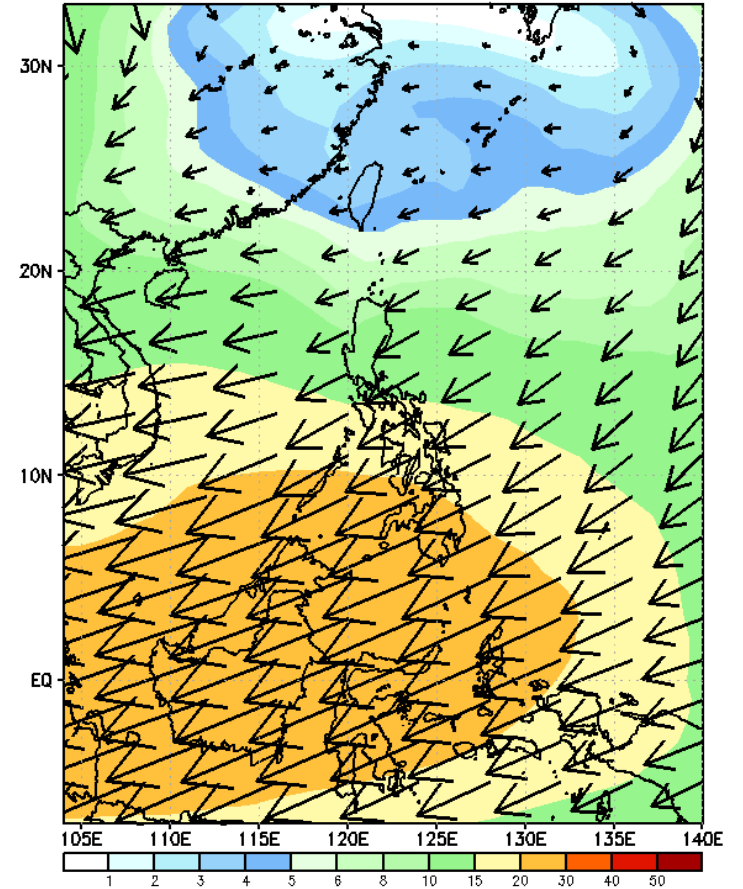
GEFS Week-2 850-hPa Wind Total
Valid: 20240722 - 20240728



GEFS Week-2 700-hPa Wind Total
Valid: 20240722 - 20240728

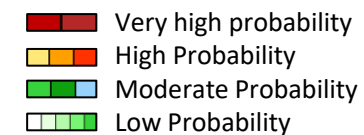


GEFS Week-2 200-hPa Wind Total
Valid: 20240722 - 20240728



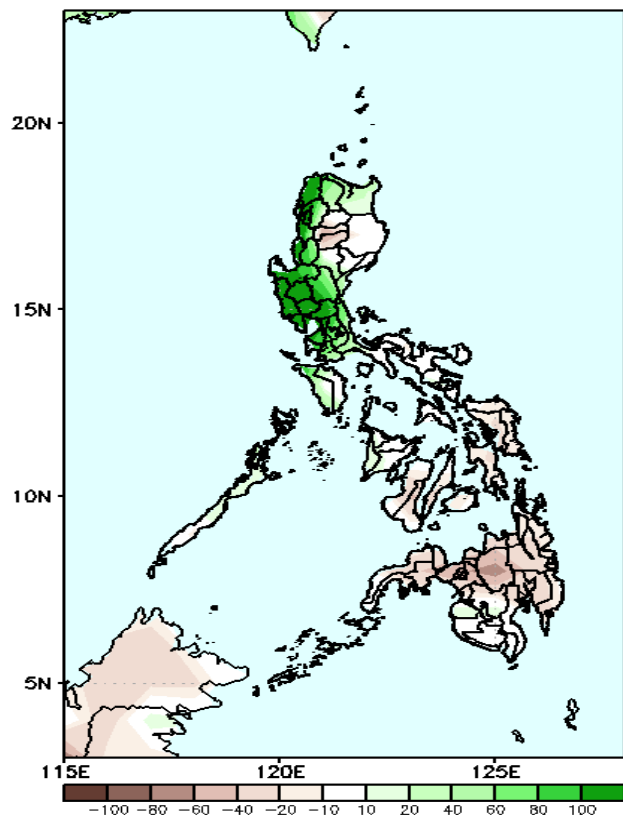
Southwest Monsoon affecting most parts of the country during the forecast period

Precipitation Anomaly and Exceedance Probability > 25/50 mm



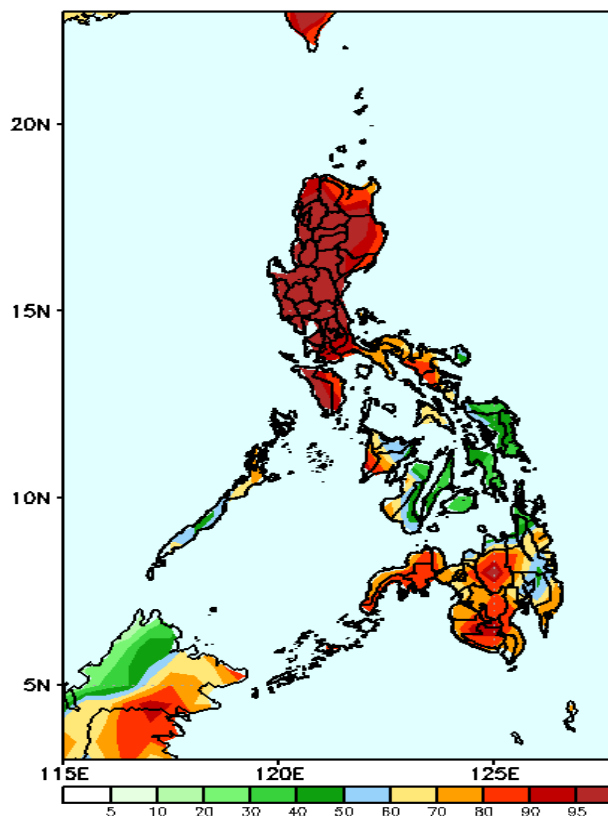
Week 2: Jul 22-28, 2024

GEFS Week-2 Precip Anomaly
Valid: 20240722 - 20240728



Increase of rainfall of 40-100mm in most parts of Ilocos Region, Central & Southern Luzon, Ifugao, Abra, Benguet, and Cagayan while 20-60mm Rainfall deficit is expected for the rest of the country.

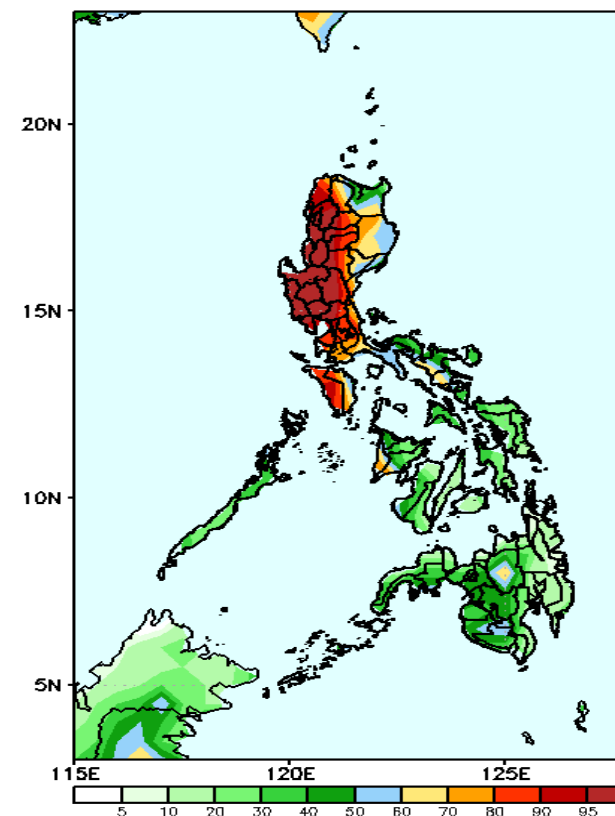
GEFS Week-2 Exceedance Prob. > 25mm
Valid: 20240722 - 20240728



Probability to Exceed 25mm

- High to very high over most parts of Luzon;
- Moderate to high over the rest of the country.

GEFS Week-2 Exceedance Prob. > 50mm
Valid: 20240722 - 20240728

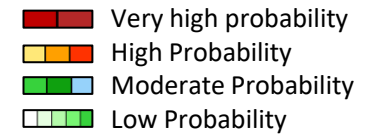


Probability to Exceed 50mm

- High to very high over Ilocos Region, most of CAR, Nueva Vizcaya and Central Luzon;
- Moderate to high over the rest of Luzon, Antique, and some parts of Iloilo and Bukidnon;
- Low to moderate over the rest of the country.

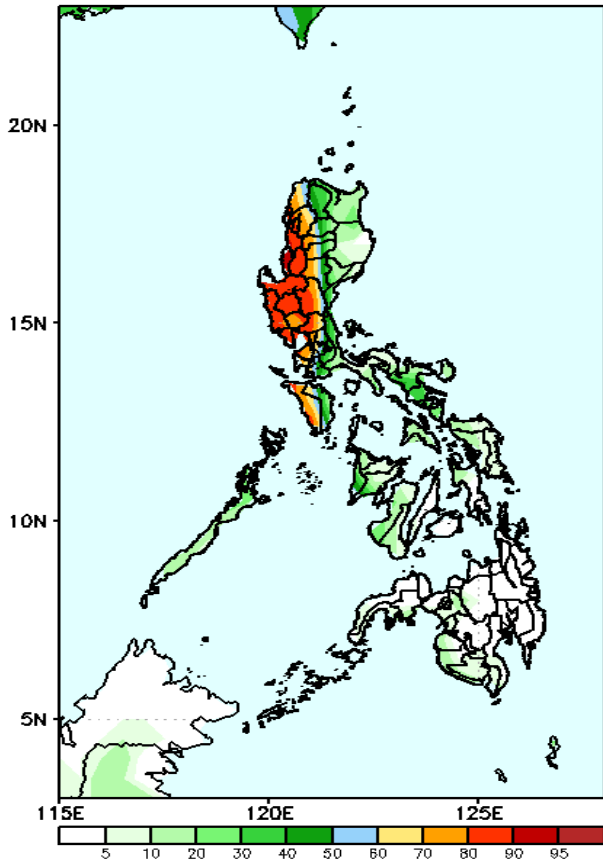


Exceedance Probability > 100/150/200 mm



Week 2: Jul 22-28, 2024

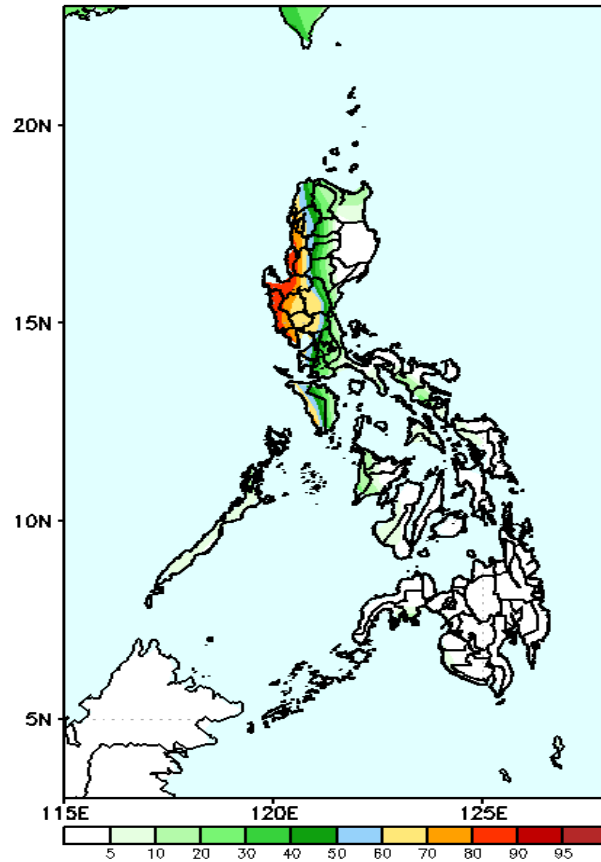
GEFS Week-2 Exceedance Prob. > 100mm
Valid: 20240722 - 20240728



Probability to Exceed 100mm

- High to very high over La Union, Pangasinan, Zambales and Bataan;
- Moderate to high over the rest of Ilocos Region, CAR, the rest of Central Luzon, Cavite, Batangas and Occ. Mindoro;
- Low to moderate over the rest of Luzon;
- Low over the rest of the country.

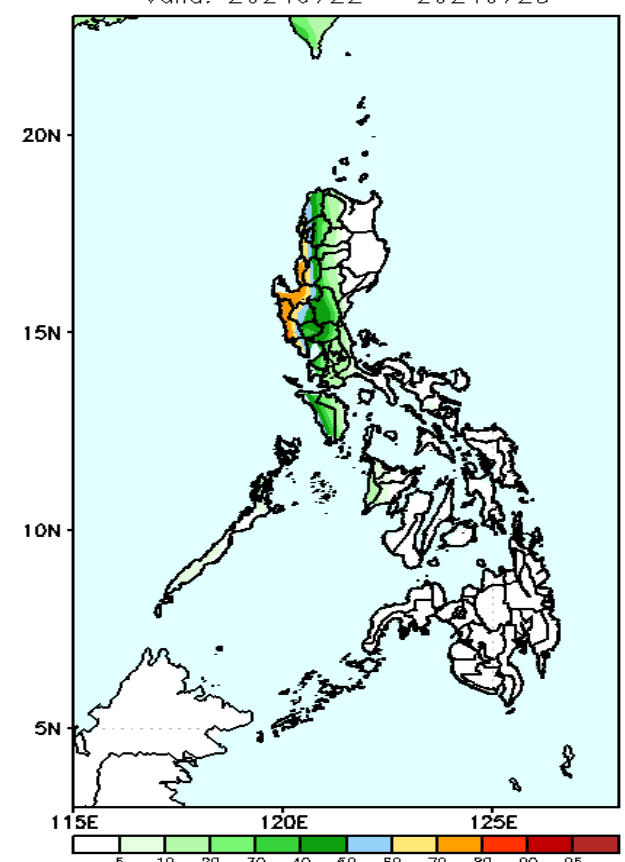
GEFS Week-2 Exceedance Prob. > 150mm
Valid: 20240722 - 20240728



Probability to Exceed 150mm

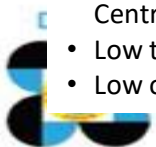
- Moderate to high over most of Ilocos Region, Abra, Benguet and most of Central Luzon and Mindoro Occidental; Low over the rest of the country.

GEFS Week-2 Exceedance Prob. > 200mm
Valid: 20240722 - 20240728



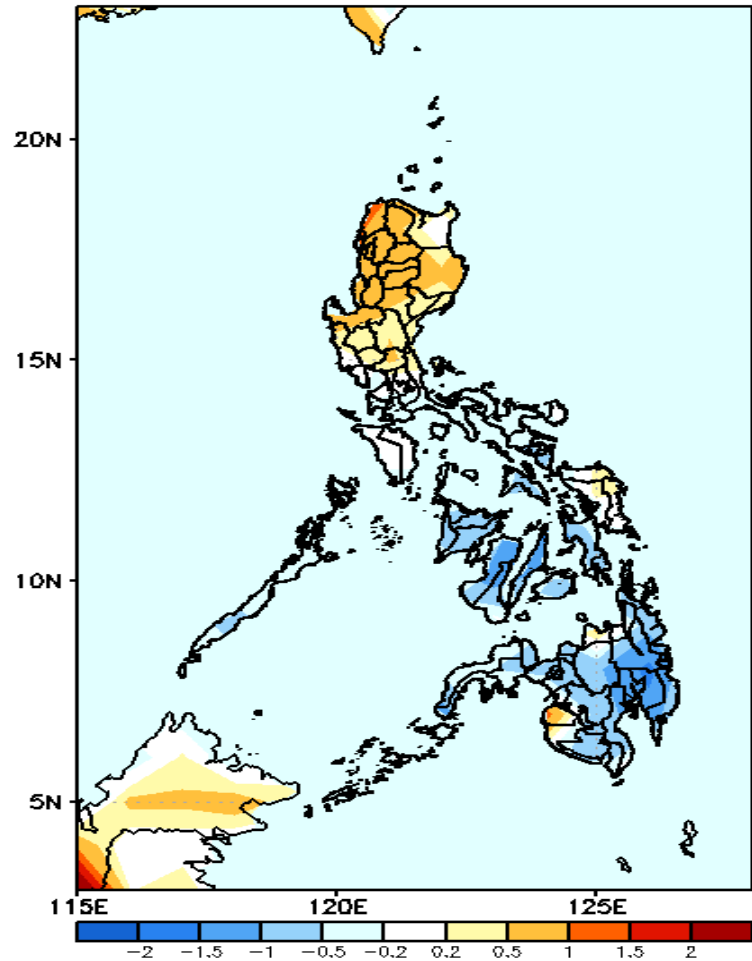
Probability to Exceed 200mm

- Moderate to high over most of Ilocos Region, Abra, Benguet, Zambales and Bataan;
- Low over the rest of the country.



GEFS Week-1 & 2 Forecasts: T2m Anomaly

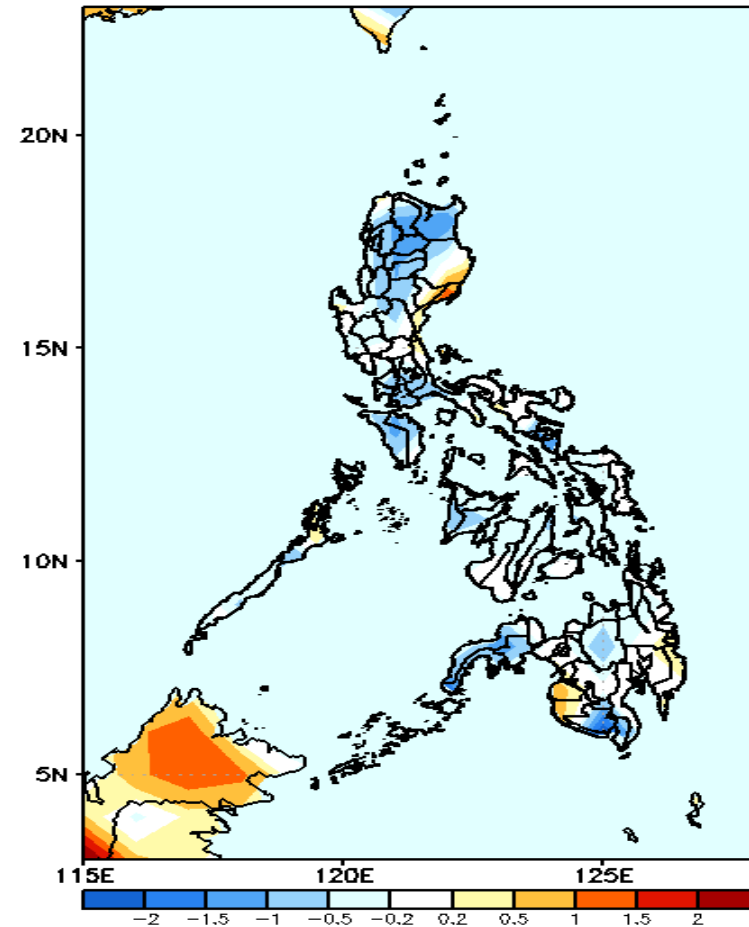
GEFS Week-1 T2m Anomaly
Valid: 20240715 - 20240721



2m Temperature Week 1: Jul 15-21, 2024

Near to slightly warmer than average surface air temperature will likely be experienced in most parts of Luzon, Samar provinces and Maguindanao while the rest of the country will likely have slightly cooler to cooler than average surface air temperature.

GEFS Week-2 T2m Anomaly
Valid: 20240722 - 20240728



2m Temperature Week 2: Jul 22-28, 2024

Near to cooler surface air temperature will likely be experienced in most parts of the country except in Aurora and the eastern part of Maguindanao and Sultan Kudarat where near to slightly warmer than average temperature is expected.

